

MONTHLY MEMBERSHIP PROGRESS REPORT

District A 15

Results as of: 7/31/2024

GMT:

LOCATION ONTARIO

GMT CA

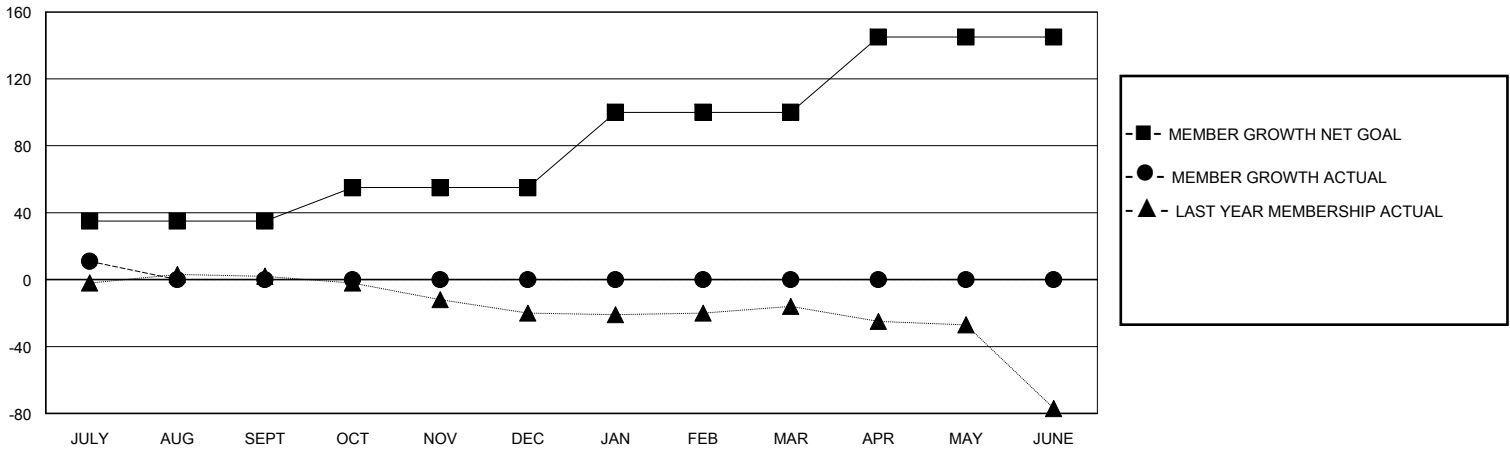
Clubs			
RESULTS FOR 2024-2025			
QUARTER	NEW CLUB GOAL	NEW CLUBS	DROPPED CLUBS
JULY/AUG/SEPT	0	0	0
OCT/NOV/DEC	1	0	0
JAN/FEB/MAR	0	0	0
APR/MAY/JUNE	0	0	0

Members			
RESULTS FOR 2024-2025			
QUARTER	MEMBER GROWTH NET GOAL	MEMBER GROWTH ACTUAL	DROPPED MEMBERS ACTUAL (including transfers)
JULY/AUG/SEPT	35	19	6
OCT/NOV/DEC	20	0	0
JAN/FEB/MAR	45	0	0
APR/MAY/JUNE	45	0	0

GOALS AND ACTUAL NEW CLUBS CUMULATIVE



GOALS AND ACTUAL MEMBERS CUMULATIVE



DROPPED CLUBS: 0	7 CLUBS OF 57 ADDED 1 OR MORE NEW MEMBERS	GENDER DISTRIBUTION
		MALE 913 (71.38%)
		FEMALE 366 (28.62%)
DROPPED MEMBERS	CLICK HERE FOR CUMULATIVE MEMBERSHIP DATA	TOTAL FAMILY UNIT MEMBERS 159
DECEASED 3		FAMILY MEMBERS PAYING HALF DUES 82
CLUB CANCELLED 0		
OTHER 3		
TOTAL 6		